

FDA COMPLIANT AODD PUMPS

In stock and ready for immediate delivery



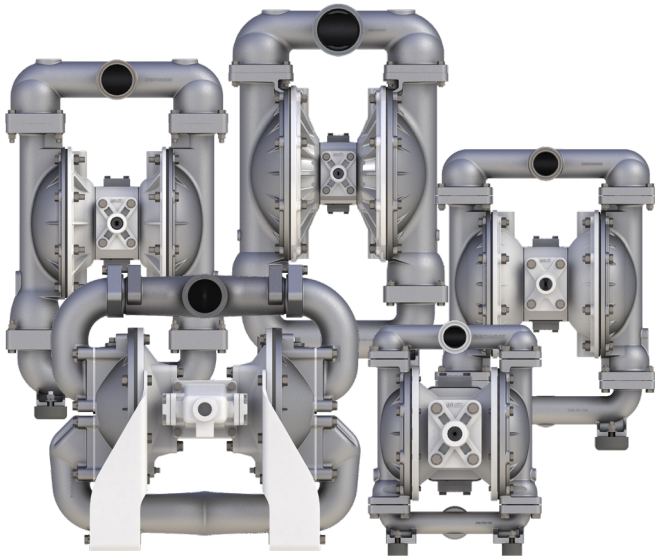
FB-Series

Clamp-Band construction for applications requiring frequent cleaning



T-Series

Bolted construction for applications requiring robust, leak-free performance



T-Series

Unique Features

- All Bolted Construction for applications requiring robust, leak-free performance
- As cast 316 stainless steel wetted section for compliance with FDA (CFR) Title 21 Part 177
- White-Epoxy coated aluminum non-wetted section for compatibility with washdown chemicals (stainless steel available on some models)
- 2" & 3" models offer "best in class" air efficiency and flow capacity for maximum performance with the least amount of energy used
- 2" Flap Valve Pump available for fluids containing large solids



FB-Series

Unique Features

- Clamp-Band construction and wing-nut fasteners for applications requiring frequent cleaning – 1 1/2", 2", and 3" models only
- Electropolished 316 stainless steel wetted section for reduced product adhesion
- Nickel-plated aluminum non-wetted sections for compatibility with washdown chemicals (polypropylene or stainless steel available on some models)
- ATEX Compliant (most models) for applications requiring a grounded pump

Common Features

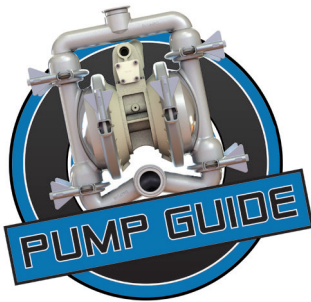
- Constructed from FDA compliant materials
 - 316 Stainless Steel wetted
 - PTFE or FDA Santoprene diaphragms
- EC1935/2004 certified for food contact materials
- Sanitary clamp connections
- Full range of sizes from 1/2" to 3"
- Ready for immediate delivery

WARREN RUPP, INC.				
Declaration of Conformity				
<p>Manufacturer: Warren Rupp, Inc., 800 N. Main Street, Mansfield, Ohio, 44902 USA certifies that SANDPIPER® Air-Operated Double Diaphragm Food Processing Pump Models and Tranquillizer® Surge Suppressor Models comply with the European Community Regulations: (EC) No 1935/2004 for Food Contact Materials (EC) No 2023/2006 Good Manufacturing Practice (EU) No 10/2011 on plastic materials and articles intended to come in contact with food</p>				
Food Processing Pump Models:				
T1F81SABWT8600.	T1S81SST8T8600.	T3081SD5WT8600.	F1081SZCNTF8600.	F2081SHHNTF8600.
T1F81S8WT8600.	T2081SASWT8600.	T3081SASST8600.	F1081SDCNTF8600.	F2081SK8NTF8600.
T1F81S8SNT8600.	T2081S8SNT8600.	T3081S8SST8600.	F1581SK8NTF8600.	F2081S8ZCNTF8600.
T1F81SL8WT8600.	T2081SASST8600.	S982, TD359.	F1581SK1NTF8600.	F2081SDCNTF8600.
T1F81S8WT8600.	T2081S8SST8600.	F0581SD5PTF8600.	F1581SZCNTF8600.	F2081SH8CNT8600.
T1S81SD8WT8600.	T2081SASWT8600.	F0581SD5PTF8600.	F1581SH4NTF8600.	F2081SK8SNTC8600.
T1S81S8S8WT8600.	T2081SD8WT8600.	F0581SH8PTF8600.	F1581SDCNTF8600.	F2081S2ZCNTC8600.
T1S81S8S8T8600.	T2081SASST8600.	F0581SD5PTF8600.	F1581SK8SNTC8600.	F3081SH8NTF8600.
T1S81S8S8T8600.	T2081S8S8T8600.	F1081SH8SNTF8600.	F1581SZCNTC8600.	F3081SK8CNTF8600.
T1S81S8TWT8600.	T3081SASWT8600.	F1081SK8SNTF8600.	F1581SH8SNTC8600.	F3081S8ZCNTF8600.
Tranquillizer® Surge Suppressors:				
TA1.NG1S5	TA2.NG2S5	TA1.V2.NG1S5	TA3.NG2S5	TA3.NG2S5
TA25.NG1S5	TA50.NG2S5	TA40.NG1S5	TA3.NG2S5	TA3.NG2S5
<p>• Materials used in equipment intended for food contact (Annex I (EC) No 1935/2004): • Rubber • Metals & Alloys • Plastics</p> <p>Plastic Materials: PTFE and FKM/ PTFE coated The plastic components are suitable to come in contact with multiple food types, provided that storage contact time does not exceed 1/2 hour, contact temperature does not exceed 40°C and maximum operating temperatures within the instructions manual are not exceeded. Diaphragm failure may allow process fluids to come in contact with nonconforming materials. Regular inspections are recommended.</p>				
<p>• This Declaration is based on: • Declaration of Conformities from raw material suppliers • Total Migration Analysis per (EU) No 10/2011</p>				
<p>• Supporting document will be made available to competent authorities to demonstrate compliance</p>				
<p><i>David Roseberry</i> Signature of authorized person</p>			<p>February 8, 2013 Date of Issue</p>	
<p>David Roseberry Printed name of authorized person</p>			<p>Director of Engineering Title</p>	
			<p>February 25, 2019 Date of revision</p>	
IBEX				CE

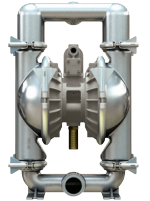
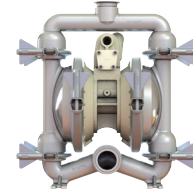
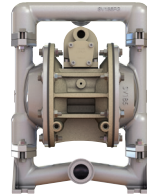
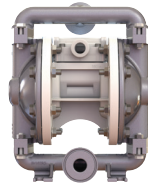
SANITARY & Food Pumps

Technical Specifications

Offering an extensive range of products engineered to perform in your most demanding applications



FB-Series





MODEL		F05	F10	F15	F20
Typical Diaphragm Pump HYGIENIC Applications	Port Size (Internal)	1/2" (12.7 mm)	1" (25.4 mm)	1 1/2" (38 mm)	2" (50.8 mm)
	Maximum Flow Rate (GPM / LPM)	0-12 gpm (0-45.4 lpm)	0-49 gpm (0-185.5 lpm)	0-71 gpm (0-268 lpm)	0-185 gpm (0-700 lpm)
	Check Valve Type	Ball	Ball	Ball	Ball
	Pump Construction	Bolted	Bolted	Clamped	Clamped
	Solids Handling -Up to-	1/16"	1/8"	3/16"	1/4"
	Wetted Materials	316 Stainless Steel	316 Stainless Steel	316 Stainless Steel	316 Stainless Steel
	Air Section Materials	Polypropylene Nickel Plated Aluminum	Nickel Plated Aluminum Polypropylene	Nickel Plated Aluminum	Nickel Plated Aluminum Stainless Steel
	Surface Treatment	Electropolished Internally & Externally	Electropolished Internally & Externally	Electropolished Internally & Externally	Electropolished Internally & Externally
	Wetted Casting Surface Finish, Ra	Ra 125 μ-in (3.175 μ-m)	Ra 125 μ-in (3.175 μ-m)	Ra 125 μ-in (3.175 μ-m)	Ra 125 μ-in (3.175 μ-m)
	Diaphragm Material	PTFE One-Piece* Hytrel Santoprene®	PTFE One-Piece* Hytrel Santoprene®	PTFE w/ Backer Hytrel Santoprene®	PTFE w/ Backer PTFE One-Piece* Hytrel Santoprene®
	Connection Size / Type	1 1/2" Sanitary Clamp	1 1/2" Sanitary Clamp	2" Sanitary Clamp	2 1/2" Sanitary Clamp
	Cleaning / Sanitizing Methods	Clean Out of Place (COP)	Clean Out of Place (COP)	Clean Out of Place (COP)	Clean Out of Place (COP)
Certifications	FDA COMPLIANT	FDA COMPLIANT	FDA COMPLIANT	FDA COMPLIANT	

Note: See service manual for complete specifications.

Santoprene® is a registered trademark of Exxon Mobil Corp

*One Piece PTFE NOT EC 1935 Certified

	T-Series					
						
	F30	T1F	T15	T20	T30	TSA2
	3" (76.2 mm)	1" (25.4 mm)	1 1/2" (38 mm)	2" (50.8 mm)	3" (76.2 mm)	2" (50.8 mm)
	0-234 gpm (0-886 lpm)	0-45 gpm (0-170 lpm)	0-106 gpm (0-401 lpm)	0-200 gpm (0-758 lpm)	0-285 gpm (0-1,079 lpm)	0-208 gpm (0-787 lpm)
	Ball	Ball	Ball	Ball	Ball	Flap
	Clamped	Bolted	Bolted	Bolted	Bolted	Bolted
	3/8"	1/4"	1/4"	1/4"	3/8"	2"
	316 Stainless Steel	316 Stainless Steel	316 Stainless Steel	316 Stainless Steel	316 Stainless Steel	316 Stainless Steel
	Nickel Plated Aluminum Stainless Steel	Epoxy Coated Aluminum	Epoxy Coated Aluminum Stainless Steel	Epoxy Coated Aluminum Stainless Steel	Epoxy Coated Aluminum Stainless Steel	Epoxy Coated Aluminum
	Electropolished Internally & Externally	As Cast	As Cast	As Cast	As Cast	As Cast
	Ra 125 μ-in (3.175 μ-m)	Ra 125 μ-in (3.175 μ-m)	Ra 125 μ-in (3.175 μ-m)	Ra 125 μ-in (3.175 μ-m)	Ra 125 μ-in (3.175 μ-m)	Ra 125 μ-in (3.175 μ-m)
	PTFE w/ Backer PTFE One-Piece* Hytrel Santoprene®	PTFE w/ Backer PTFE One-Piece* Nitrile Santoprene®	PTFE w/ Backer PTFE One-Piece* Santoprene®	PTFE w/ Backer PTFE One-Piece* Nitrile Santoprene®	PTFE w/ Backer Nitrile Santoprene®	Nitrile
	3" Sanitary Clamp	1 1/2" Sanitary Clamp	2" Sanitary Clamp	2 1/2" Sanitary Clamp	3" Sanitary Clamp	2 1/2" Sanitary Clamp
	Clean Out of Place (COP)	Clean Out of Place (COP)	Clean Out of Place (COP)	Clean Out of Place (COP)	Clean Out of Place (COP)	Clean Out of Place (COP)
						



APPLICATIONS

Product Transfer / Tank Over, Filling Lines, Blending and Mixing, and Ingredient Injection



EMERGING HEALTH & SAFETY MARKETS

- CBD Oil Production
- Sanitizers and Disinfectants
- Latex Gloves



DAIRY

- Yogurt
- Cottage Cheese
- Milk
- Butter
- Eggs
- Coffee Cream
- Ice Cream



FOOD & BEVERAGE

- Salsa
- Chili
- Soy Sauce
- Beer & Wine
- Juice Concentrates
- Corn Oils/Syrups
- Edible Oils
- Chocolate
- Salad Dressing
- Mayonnaise
- Condiments
- Tomato Sauce



PERSONAL CARE

- Hair Gel
- Shampoo
- Soap
- Perfumes
- Creams/Lotions
- Cosmetics
- Antiseptics
- Hair dye



PHARMACEUTICAL

- Chemicals
- Alcohol
- Deionized Water
- Acids



MEAT & POULTRY PROCESSING

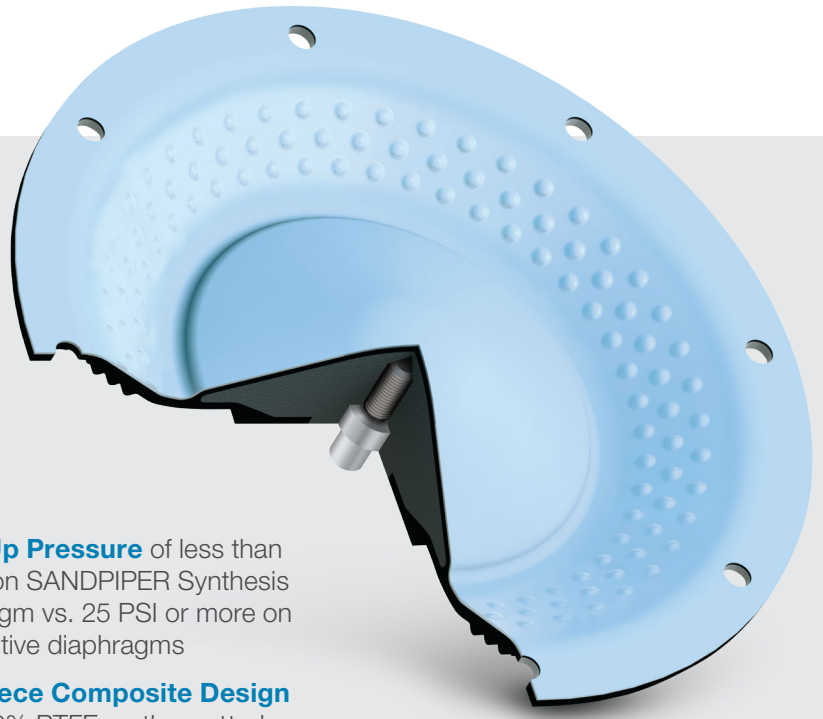
- Animal blood
- Heparin
- Vaccines

SANDPIPER Synthesis One-Piece Diaphragms

A premium one-piece diaphragm that creates optimum conditions for high performance pumping and reliability. Expect longer service life and reduced maintenance costs with this premium diaphragm.

Available on most models.

- **Temperature Range** 14°F to 176°F (-10°C to 80°C)
- **Torque-Free Installation** Simply hand turned into position
- **No Center Hole** for superior leak free operation and installation
- **No Outer Diaphragm Plate** Abrasion due to trapped fluids
- **Oversized Integrated Plate** supports nearly 50% of the diaphragm through the entire dynamic motion
- **Start-Up Pressure** of less than 10 PSI on SANDPIPER Synthesis Diaphragm vs. 25 PSI or more on competitive diaphragms
- **One-Piece Composite Design** with 100% PTFE on the wetted side bonded to a Nitrile Rubber Backer (NRB) with an integrated diaphragm plate



SANDPIPER Standard Duty Non-Metallic Pumps

Chemically resistant, high-performance, leak-free pumps for transfer and mixing of cleaning chemicals.

- ¼" through 3" for flow capacities as high as 280 GPM (1060 LPM)
- All bolted construction for robust, leak-free performance
- Polypropylene or PVDF wetted materials for compatibility with CIP/COP chemicals (conductive materials also available upon request)

SANDPIPER®

Warren Rupp, Inc.
A Unit of IDEX Corporation
800 North Main Street
Mansfield, OH 44902 USA

Phone: 419.524.8388
Fax: 419.522.7867
SANDPIPERPUMP.COM



Visit www.sandpiperpump.com and click on "Find a distributor" to contact your local distributor to place your order

©Copyright 2020 Warren Rupp, Inc. All Rights Reserved.